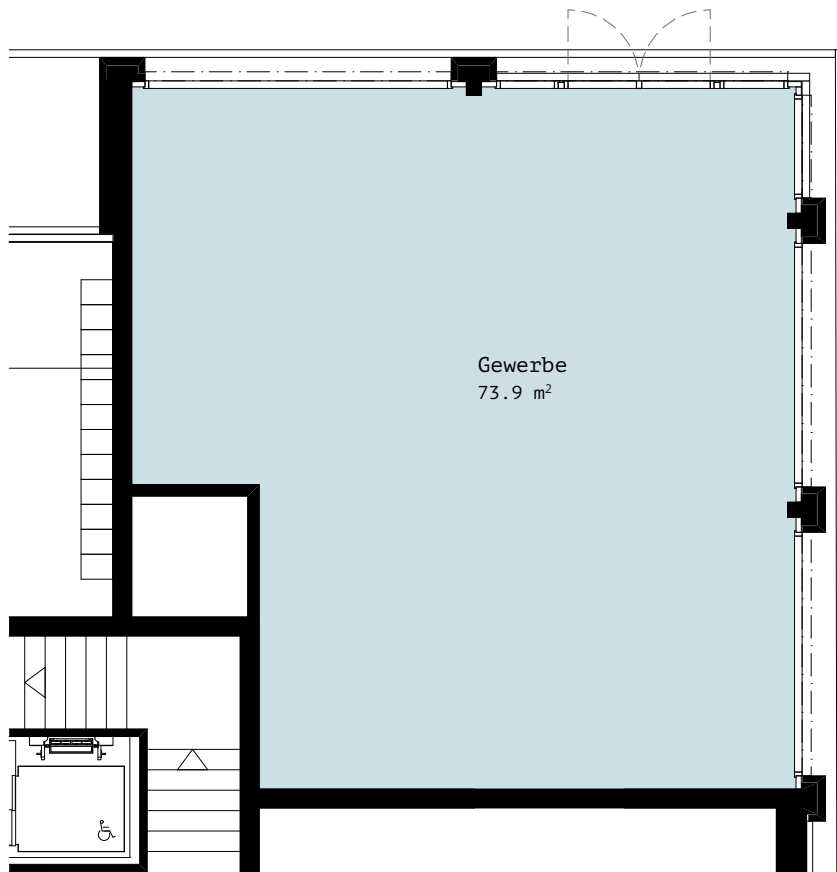
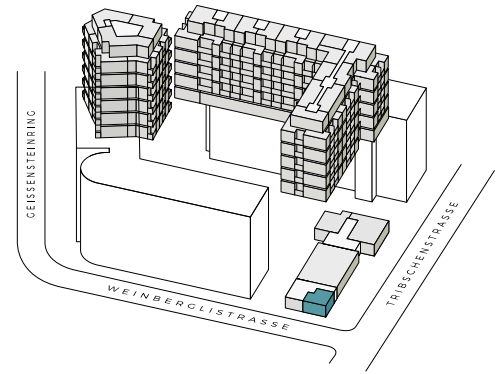


Winkelhaus
Tribtschenstrasse 62
6005 Luzern

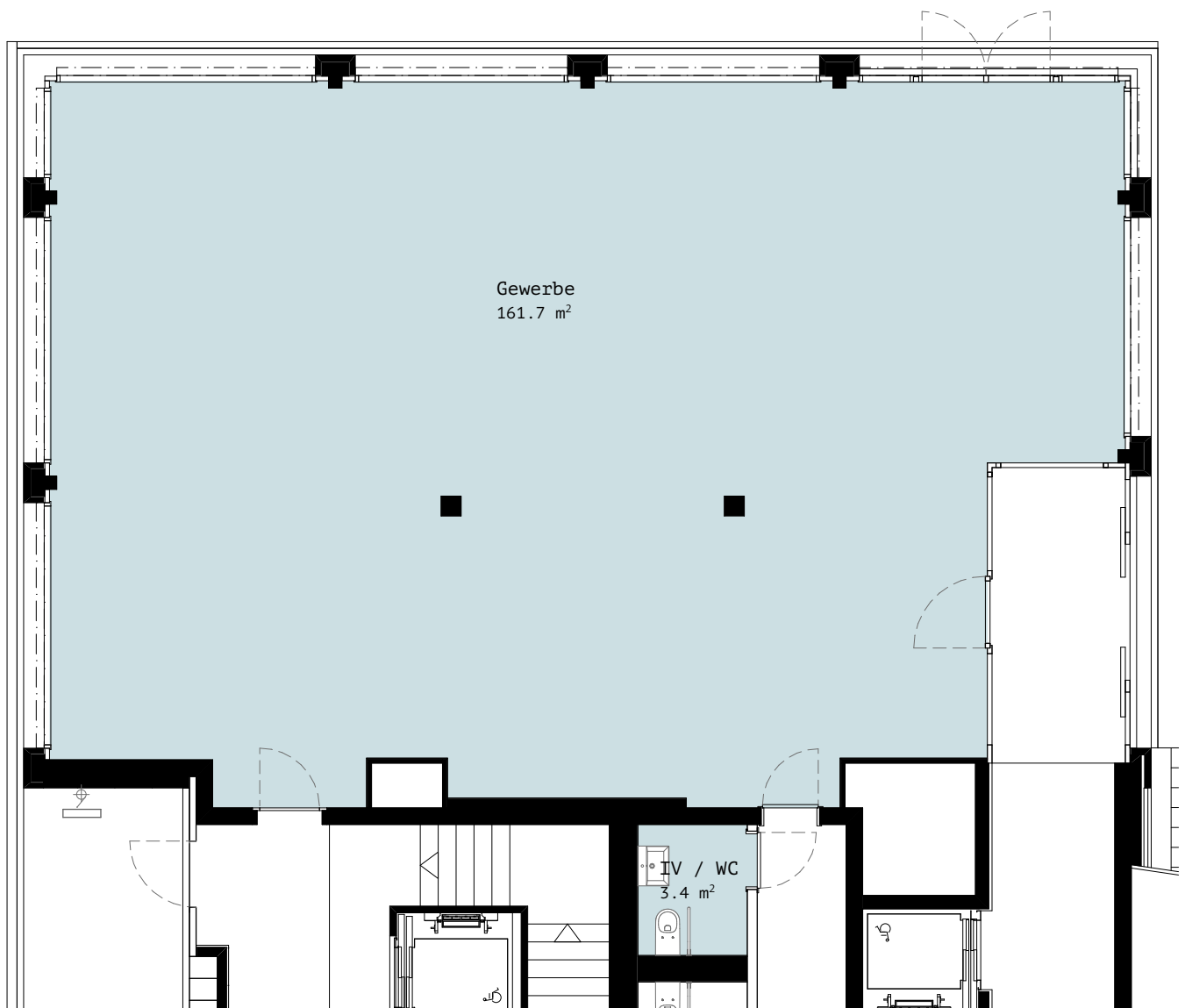
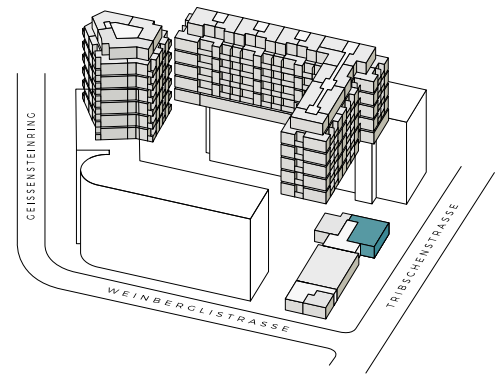
Nr. : **T62.SG.2**
Geschoss: Sockelgeschoss
Nutzfläche: ca. 73.9 m²



1:100  4

Winkelhaus
Tribtschenstrasse 62a
6005 Luzern

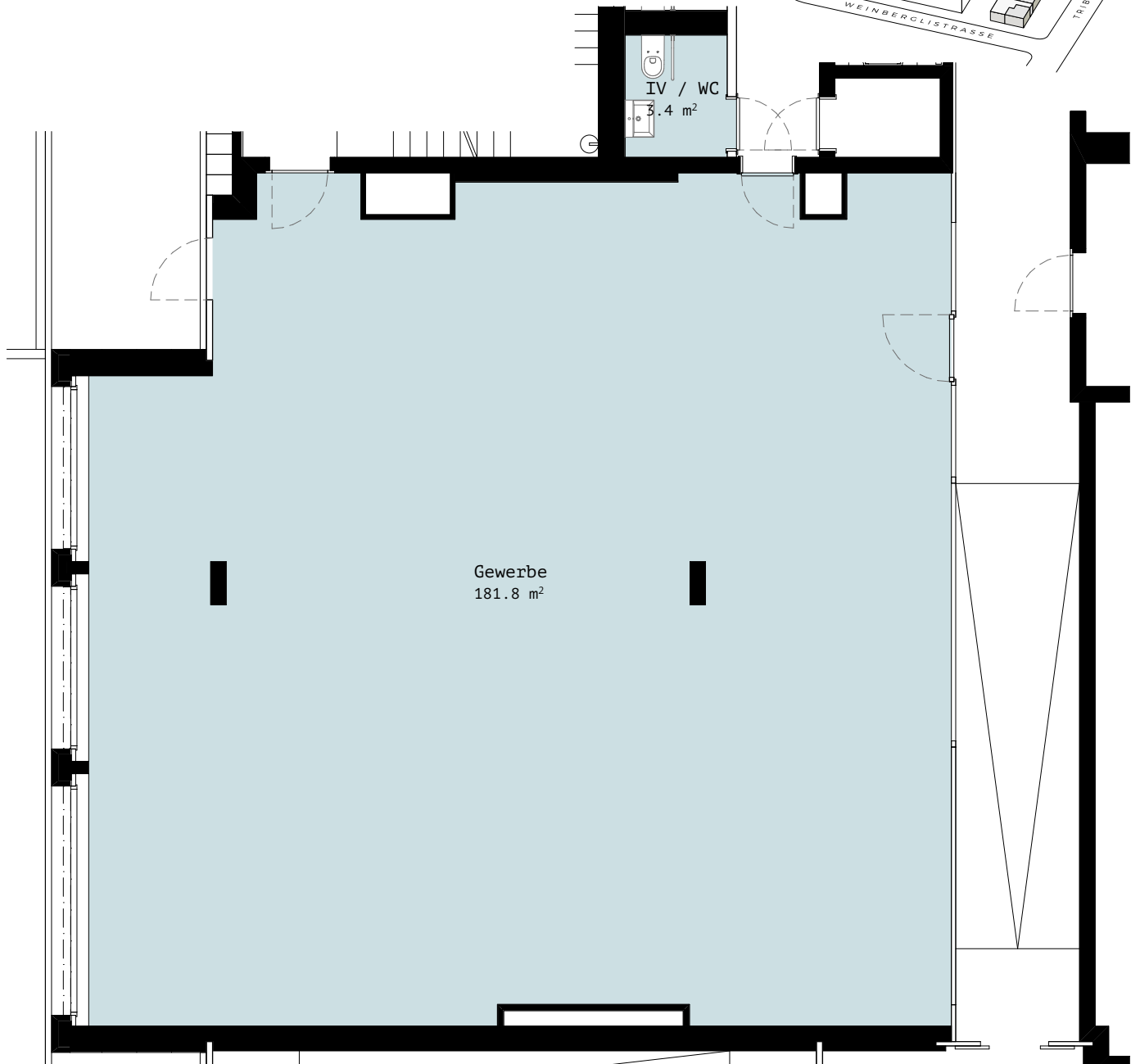
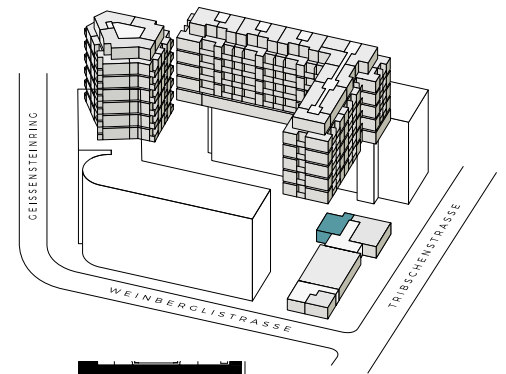
Nr. : T62a.SG.1
Geschoss: Sockelgeschoss
Nutzfläche: ca.165.1 m²



1:100 

Winkelhaus
Tribtschenstrasse 62a
6005 Luzern

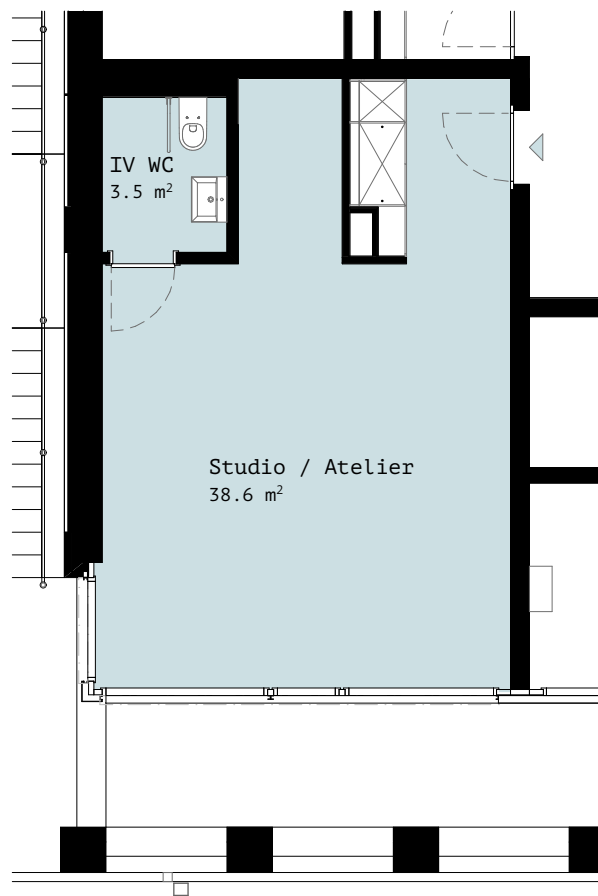
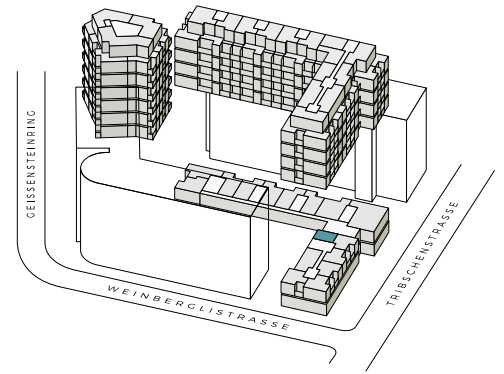
Nr. : T62a.SG.2
Geschoss: Sockelgeschoss
Nutzfläche: ca.185.2 m²



1:100 

Winkelhaus
Tribtschenstrasse 62
6005 Luzern


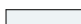

Nr. : **T62.EG.5**
Geschoss: Erdgeschoss
Nutzfläche: ca. 42.1 m²

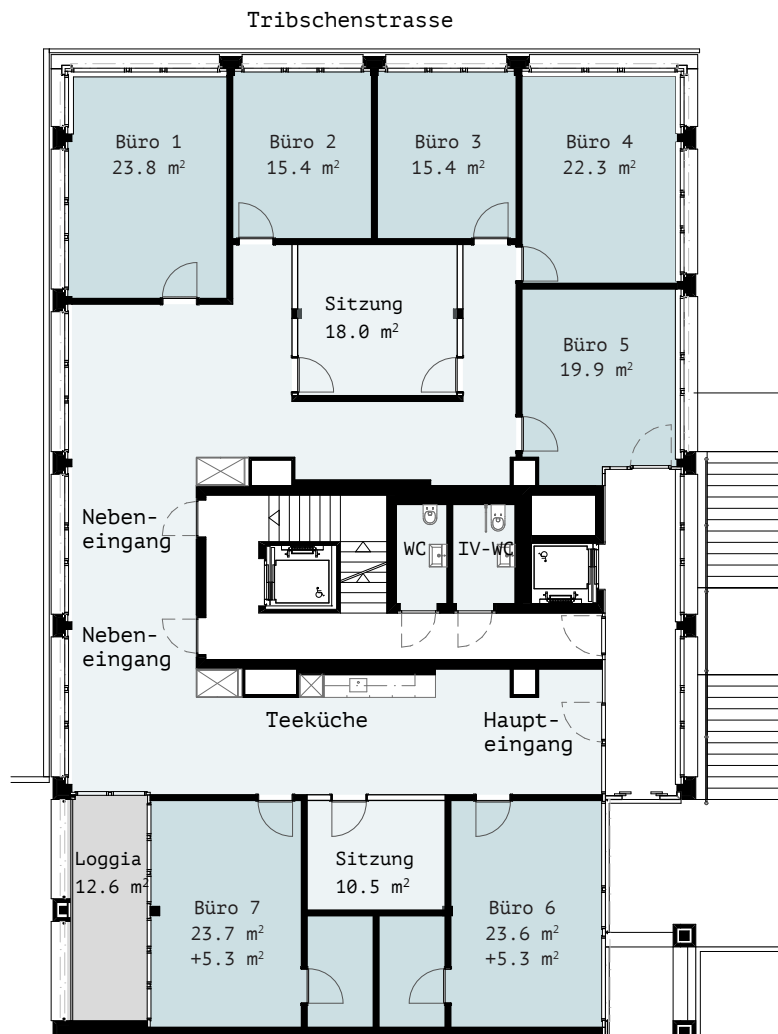
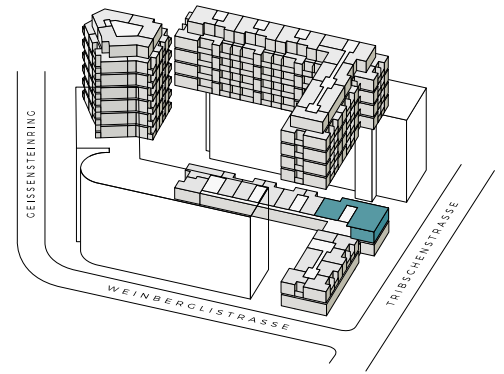


1:100  4

Winkelhaus
 Tribschenstrasse 62a
 6005 Luzern

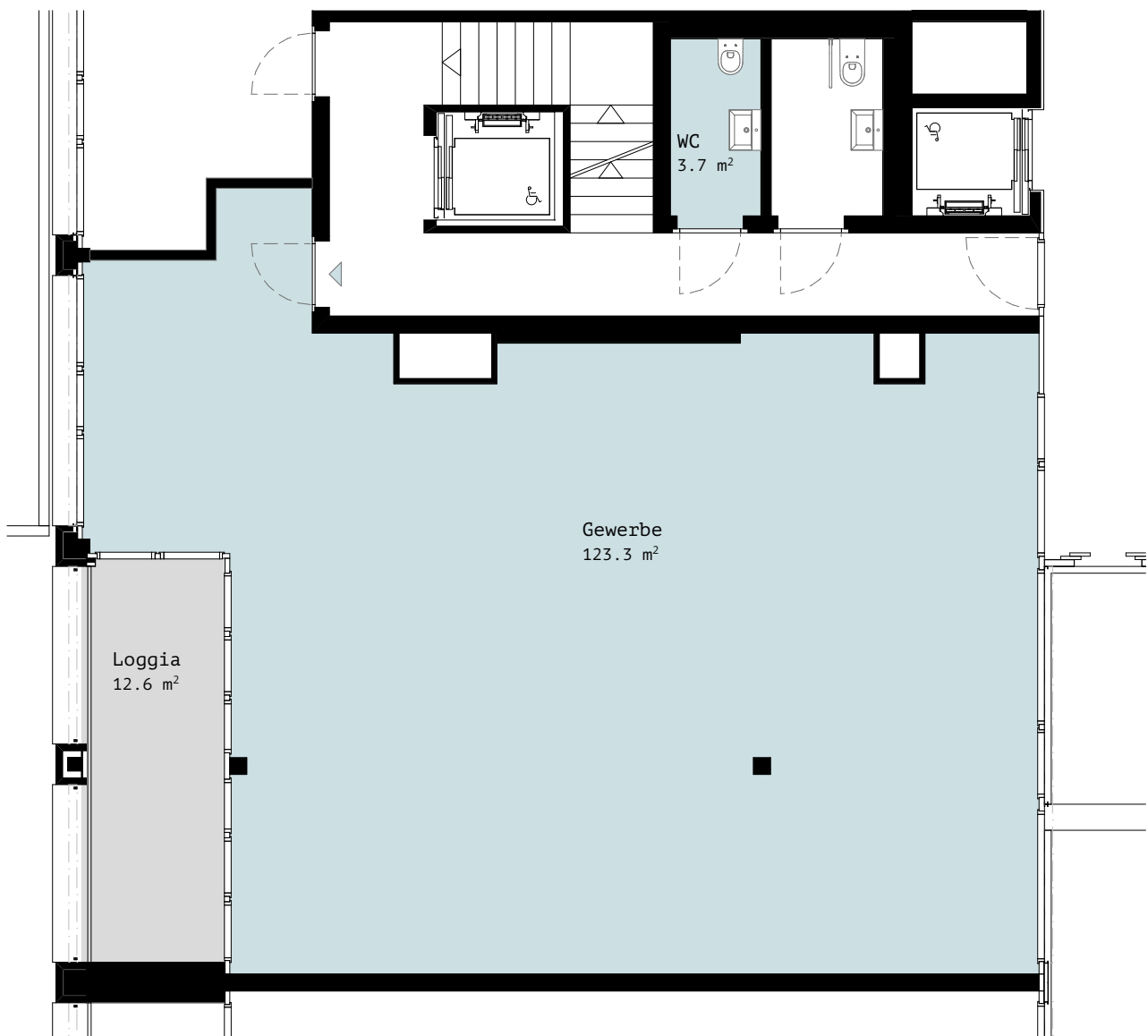
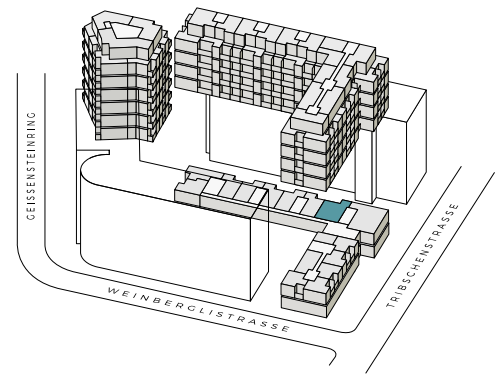
Nr.: **T62a.EG.1**
 Geschoss: Erdgeschoss

-  Mietfläche
-  Allgemeinfläche zur Mitbenutzung
-  Aussenfläche zur Mitbenutzung



Winkelhaus
Tribtschenstrasse 62a
6005 Luzern

Nr. : T62a.EG.2
Geschoss: Erdgeschoss
Nutzfläche: ca.127.0 m²
Aussenfläche: ca. 12.6 m²



1:100 